

Pitch Tendency Chart Guide

Oboe/English horn

Basic Tuning Rules

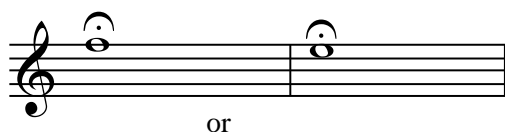
1. Warm up thoroughly before tuning
2. Always use sufficient air support and play at a mezzo forte dynamic level.
3. Do not use vibrato or try to manipulate the tuning note—play it straight.
4. Before completing the chart, tune to the pitches shown below. Adjust the reed if the pitch is flat or sharp.

Your Tuning Notes

OBOE



ENGLISH HORN



Your Tuning Mechanism

None. Oboe tuning is dependent on a properly adjusted reed and a good embouchure. On English horn, it is possible to use bocals of slightly different lengths to raise or lower the pitch, but a well-formed embouchure and good reed are emphasized.

How to Adjust a Pitch While Playing

- Flat: increase amount of reed in mouth, increase embouchure pressure.
- Sharp: decrease amount of reed in mouth, decrease embouchure pressure.
- Alternate fingerings

Common Out of Tune Notes

