

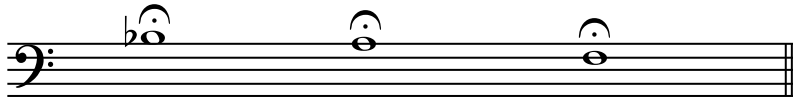
# Pitch Tendency Chart Guide

## Bassoon

### Basic Tuning Rules

1. Warm up thoroughly before tuning
2. Always use sufficient air support and play at a mezzo forte dynamic level.
3. Do not use vibrato or try to manipulate the tuning note—play it straight.
4. Before completing the chart, tune to the pitches shown below. Adjust the reed if pitch is sharp or flat.

### Your Tuning Notes



### Your Tuning Mechanism

None. Do not attempt to adjust the pitch of the bassoon by moving the bocal in or out of the instrument because the vent hole must be positioned so that the pad covers it. Bassoon tuning is dependent on a properly adjusted reed and a good embouchure, but bocals of slightly different lengths can be used to raise or lower the pitch of the instrument. The higher the bocal number, the lower the pitch.

### How to Adjust a Pitch While Playing

- Flat: increase amount of reed in mouth, increase embouchure pressure.
- Sharp: decrease amount of reed in mouth, decrease embouchure pressure.
- Alternate fingerings

### Common Out of Tune Notes

