

# Pitch Tendency Chart

## Clarinet

Name \_\_\_\_\_

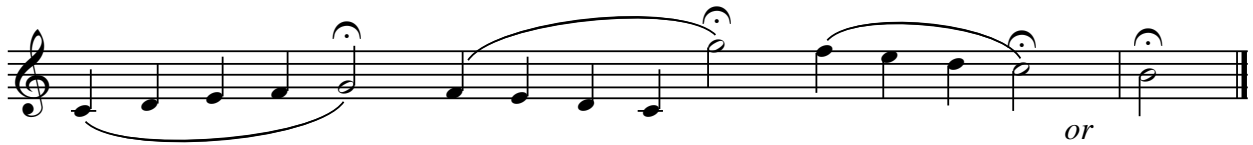
Date \_\_\_\_\_

Partner \_\_\_\_\_

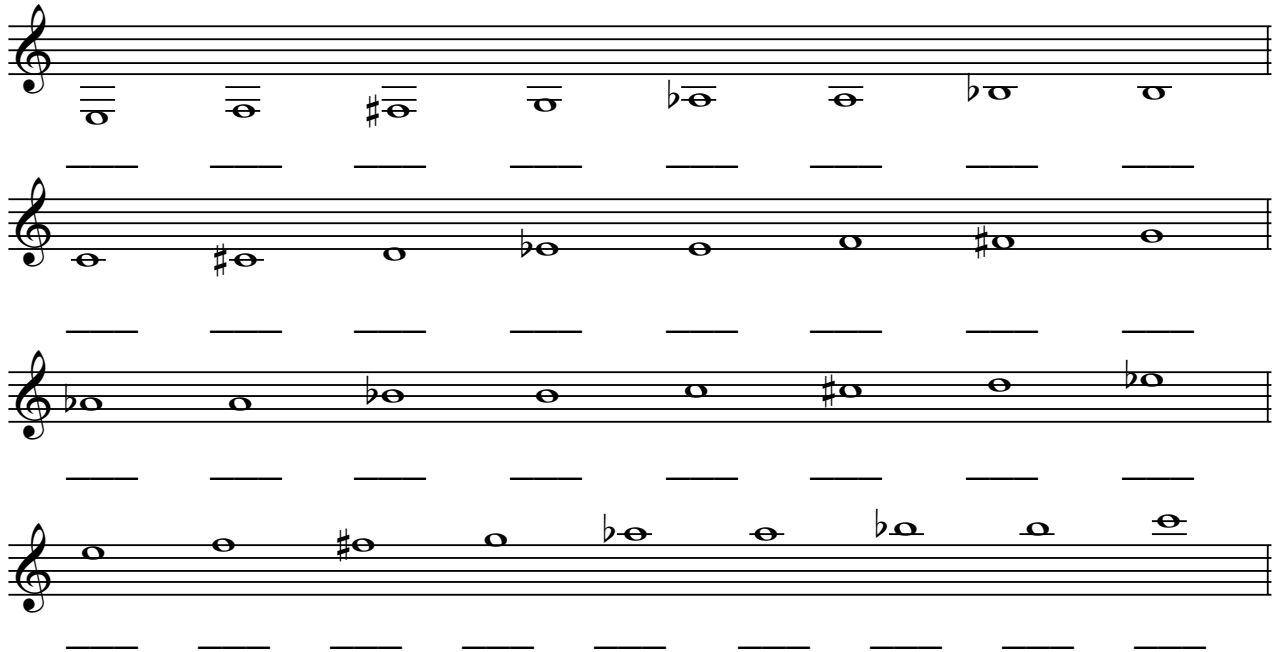
Instrument Make and Model \_\_\_\_\_

**Directions:** Read the procedures on your Pitch Tendency Chart Guide thoroughly and tune your instrument to the notes shown. When your instrument is adjusted properly to the tuning note, play each of the following notes without looking at the tuner. Have your partner record your pitch tendency in cents by marking # or b followed by the number of cents you are off pitch under each note. **Example:** #8 or b-12.

### Tuning Notes



### Chromatic Scale



### Pitch Tendencies of Dynamics

